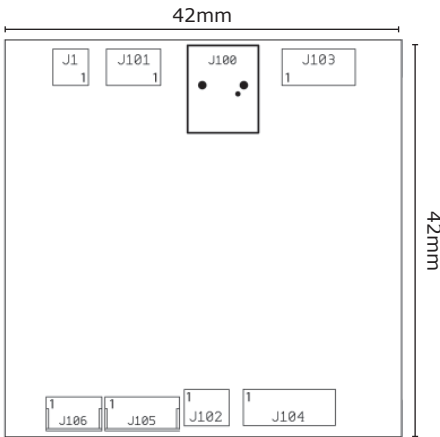
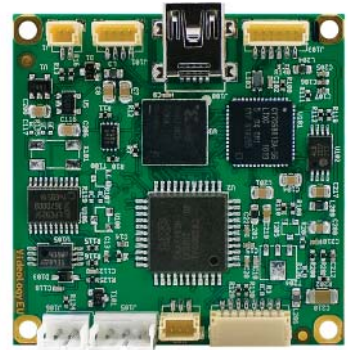


Product Features

- Video Inputs (multiplexed):
 - 1x composite video, 1x S-video
 - Video formats: NTSC/EIA, PAL/CCIR
- Video Output:
 - USB 2.0, uncompressed image data streams
 - Max Resolution:
 - NTSC/EIA: 640x480 & 704x480 @ 30fps
 - PAL/CCIR: 640x576 & 704x576 @ 25fps
- Power input USB 2.0 (5VDC)
- Power throughput 5VDC up to 200mA for powering camera boards such as 20B14X series

Software

- SFT-07019-WHQL rev 1.0.105S*
- USB 2.0 WHQL digitally certified driver supports Windows XP and Vista 32-bit and 64-bit systems
 - DirectX/DirectShow compliant
 - TWAIN compliant
 - Select Linux drivers available
 - Complete SDK available



J1 SNAP Shot Interface

PIN	FUNCTION	PIN	FUNCTION
1	GND	2	Snap Trigger

J101 GPIO Lines

PIN	FUNCTION	PIN	FUNCTION
1	GND	3	GPIO 2
2	GPIO 1	4	3.3VDC

J102 Micro IO Reserved – Not user accessible

PIN	FUNCTION	PIN	FUNCTION
1	TBD	3	TBD
2	GND		

J103 USB Interface

PIN	FUNCTION	PIN	FUNCTION
1	+5V power in USB	4	GND
2	D -	5	Shielding
3	D +	6	Shielding

J104 Camera Board Interface

PIN	FUNCTION	PIN	FUNCTION
1	C (chroma) signal of Y/C	5	Ground I2C
2	GND	6	CVBS or Y (luminance) signal of Y/C
3	I2C data to board	7	GND
4	I2C clock to board	8	Power to camera 5.0VDC

J105 Camera Input Connector (CVBS only)

PIN	FUNCTION	PIN	FUNCTION
1	Power to camera	3	CVBS IN
2	GND		

J106 External Power Interface

PIN	FUNCTION	PIN	FUNCTION
1	GND	2	Optional external power for camera

J100 Micro USB Connector

PIN	FUNCTION	PIN	FUNCTION
1	5VDC	5	GND
2	D -	6	GND – through inductor
3	D +	7	GND – through inductor
4	GND – through resistor	8	GND – through inductor

Technical Specifications

Electrical	6XV002USB-C
Video Input	CVBS or Y/C
Video Output	USB 2.0
Power Supply Input	5VDC via USB
Power Consumption	Up to 350mA (w/ USB board & external camera)
Output Power Supply	5VDC Up to 200mA unregulated feed through

Mechanical

Dimensions WxHxD	42mm x 42mm x 0.6mm (1.6" x 1.6" x 0.23")
Weight	11.33g (0.025 lbs)

Accessories

Included

Cable (J105 Connector)	70V0213 3 pin amp to flying leads
------------------------	-----------------------------------

Optional

Cable (J100 Connector)	60C1147 USB-A to Mini USB-B (10')
Cable (J103 Connector)	60C1062 USB 2.0 to 6 pin JST (8')
Cable (J104 Connector)	60C1041 8 pin JST to flying leads
Cable (J1 Connector)	60C1099 2 pin JST unterminated

Software

<i>Viewer (included)</i> <i>SFT-07019-WHQL</i>	<ul style="list-style-type: none"> WDM device drivers DirectX/DirectShow compliant TWAIN compliant (requires driver installation)
<i>SDK (optional)</i> <i>SFT-07019-SDK</i>	Complete software development kit and support for OEMs

Recommended System Requirements

Hardware	Pentium IV	2.3GHz +, 1GB hard drive, Intel USB 2.0 Host controller
Software	Windows 7, 8, 10	32 bit and 64 bit
	Windows Vista	32 bit and 64 bit
	Windows XP	Service pack 2 +, DirectX 9.0c or above

Standards

	RoHS
--	------

Complementary Models

	60V002USB-C-3.3	3.3VDC USB digitizer board
--	-----------------	----------------------------