

### Product Features

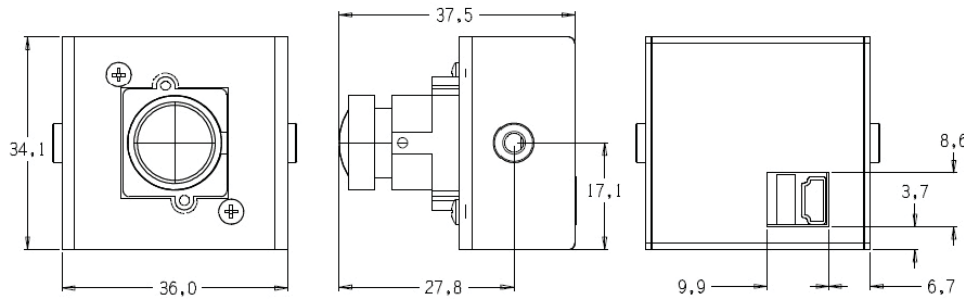
- Progressive Scan
- Low 0.1 Lux sensitivity
- Dynamic range to 120dB provides brilliant color detail within both shadows and brightest light scenes
- Robust USB 2.0 operation
- 640 x 480 resolution @ 30fps

### USB UVC Software

- Operates seamlessly on all popular Windows operating systems



Shown with optional lens



### Technical Specifications

Electrical	23C715WUVC-CL2.9N (NTSC)	23C715WUVC-CL2.9P (PAL)
Image Sensor	1/3" CMOS	
Effective Pixels (H x V)	756 x 504	
Pixel Size	6.35µm x 7.4 µm	
Frame Rate	30fps	25fps
Shutter Mode	Progressive	
Resolution	640 x 480	
Aspect Ratio	4:3	
Sensitivity	<0.1 Lux @ color / <0.01 Lux @ B/W	
White Balance Range	2,850K - 6,000K	
Wide Dynamic Range	120 db (max), 102dB (typical)	
Automatic Gain Control	up to 50dB	
Full Stream Video	NTSC (30fps)	
Video Output	USB 2.0 UVC	
Signal to Noise Ratio	>50dB	
Supplied Voltage	5VDC via USB Bus	
Power Consumption	1.0W	

### Functional Specs

Scanning System	Progressive
White Balance Control	AWB (ON default)
Day & Night	Auto (default)
Image Flip	Default off
Mirror Mode	Default off
AGC Control	Auto (default)

### Environmental

Operating Temp.	-10°C ~ 50°C (14°F ~ 122°F)
Operating Humidity	5% - 90% Non-condensing
Storage Temp.	-30°C ~ 80°C (-22°F ~ 176°F)
Storage Humidity	10% - 90% Non-condensing
MTBF	>150,000 hours

### Mechanical

Dimensions WxHxD	39mm x 34.1mm x 37.5mm (1.5" x 1.3" x 1.5") with lens
Weight	86g (3oz)
Lens Mounts	Metal M-12 board
Lens	Fixed Lens - 2.9mm

### UVC Software

	Works with standard UVC viewers
	Note: Camera is not USB 1.1 compliant

### Recommended System Requirements

Hardware	Pentium IV	2.3GHz +, 1GB hard drive, Intel USB 2.0 Host controller
Software	Windows 7,8,10	32 bit and 64 bit
	Windows Vista	32 bit and 64 bit
	Windows XP	Service pack 2, DirectX 9.0c or above

### Approbations

	RoHS
Safety	UL94V-2 (for flammability rating)
EMC	EN 55032 (2012) Emissions for ITE - conducted and radiated Class B. FCC 47CFR Part 15. Emissions - conducted and radiated Class B.