

VIDEOLOGY

IMAGING SOLUTIONS INC.
Original Equipment Manufacturer

I²C Controller Instruction Manual

20/21K13X, 20/21K14X, 20/21K15X
20/21D38X, 20/21D43X, 20/21D47X

SFT-03001 Rev 2.5.0

Prior to Using This Document: Videology reserves the right to modify the information in this document as necessary and without notice. It is the user's responsibility to be certain they possess the most recent version of this document by going to www.videologyinc.com, searching for the model number, and comparing revision letters on the respective document, located in the document's footer.

For technical assistance with this product, please contact the supplier from whom the product was purchased.

Videology Imaging Solutions, Inc. USA



37M Lark Industrial Parkway
Greenville, RI 02828
Tel: 401-949-5332
Fax: 401-949-5276
www.videologyinc.com

Videology Imaging Solutions, B.V. Europe

Neutronenlaan 4
NL-5405 NH Uden, Netherlands
Tel: +31 (0) 413-256261
Fax: +31 (0) 413-251712
www.videology.nl

Table Of Contents

- 1. Document History 3
- 2. First time installation of camera control software, parallel port and USB port 3
- 3. Parallel interface 4
- 4. USB interface 4
- 5. Start of the control software 6
- 6. New version of the software for both parallel port and USB port 6
- 7. Contact Information 8

1. Document History

Revision	Issue Date	Reason	CN#
Rev 2.3.4	07-15-09	Initial release	09-0109
Rev 2.5.0	10-05-10	Update, now recognizing USB or parallel port	10-0157

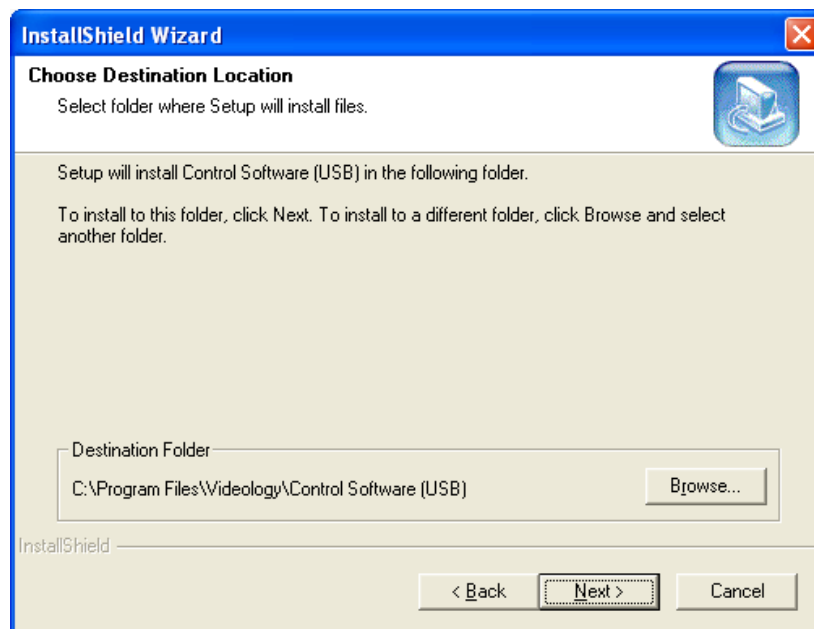
2. First time installation of camera control software, parallel port and USB port

For the installation of the software you should have administrator rights. You should have access to the following folders:

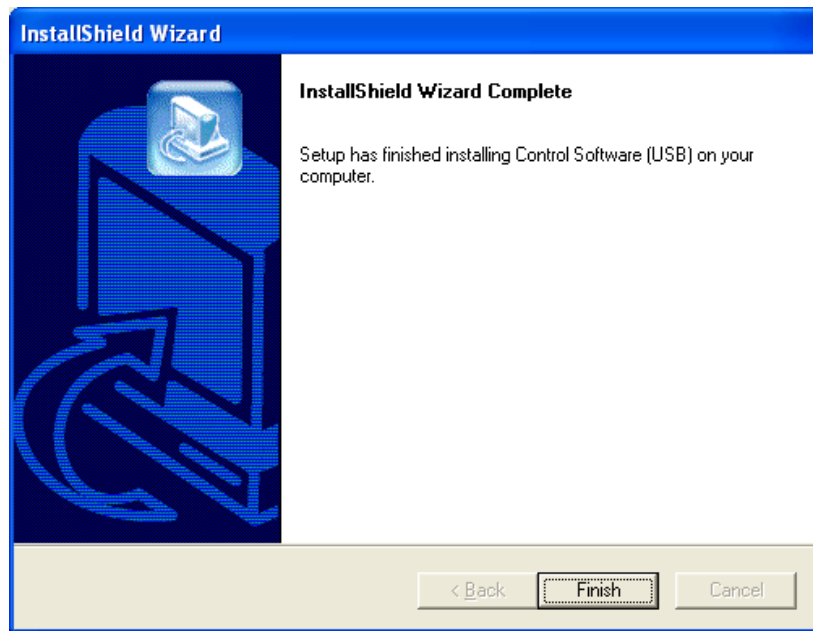
- A. ..\Windows\System
- B. ..\Windows\System32\drivers
- C. ..\Windows\inf

Do not connect the parallel interface or USB interface to the PC.

Run the self extracting executable "Control Software (USB).exe".



Select the destination folder and select "Next" to continue.



Select "Finish" for finalizing the installation of the Control software.

3. Parallel interface

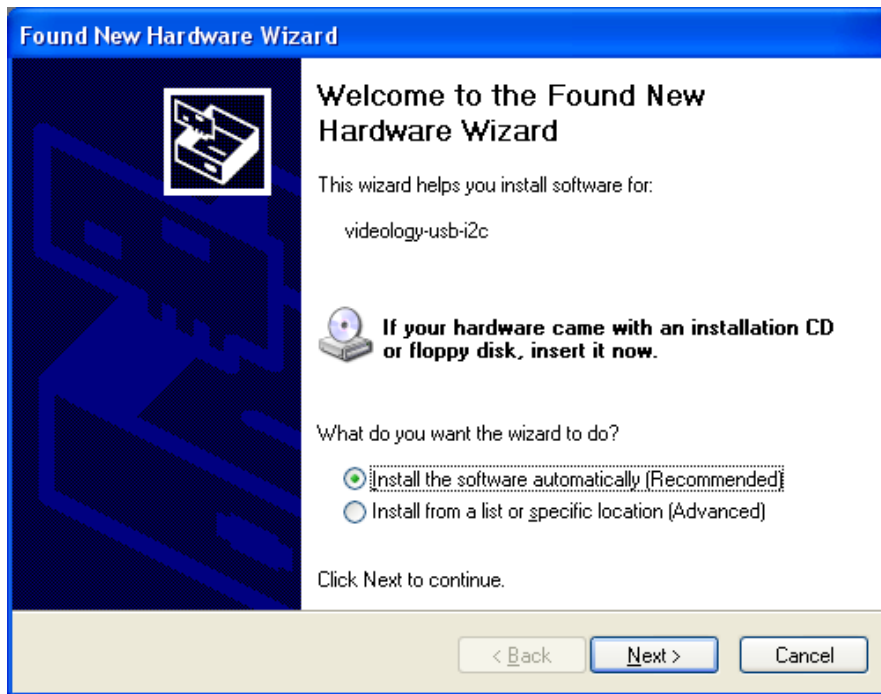
In case of using the parallel interface, you can connect the parallel port interface and control the camera.

4. USB interface

When using the USB interface, the interface driver should be installed. Follow the following procedure. Connect the USB device with the PC. The PC will not recognize the new device and the following dialog will be visible.



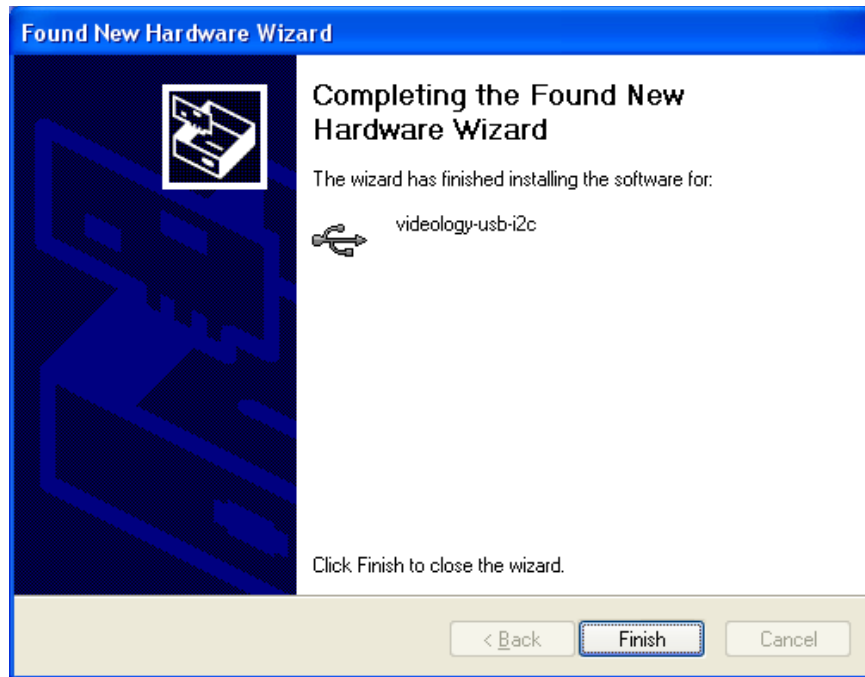
Select "Yes, this time only" and "Next".



Select "Install the software automatically" and "Next".



Select "Continue Anyway".



Select "Finish" to finalize the driver installation.

The driver for the USB interface is installed. The USB interface can now be connected to the camera.

5. Start of the control software

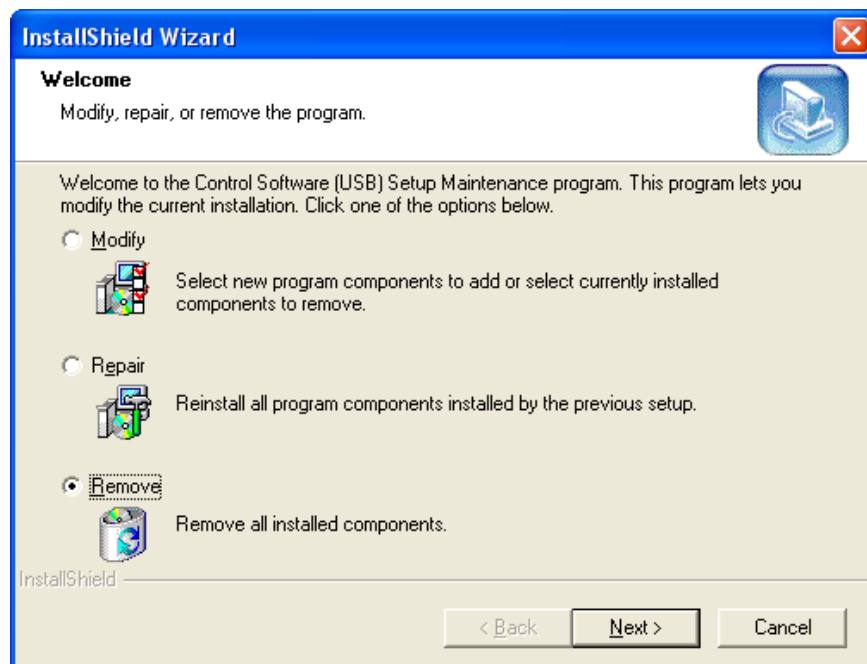
In the Program list you will find "Videology" and "Camera Control" for starting the control software.

6. New version of the software for both parallel port and USB port

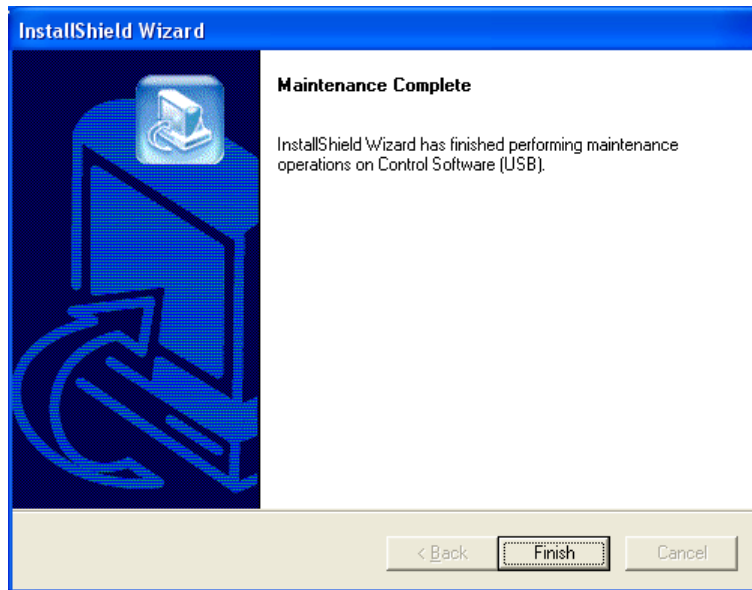
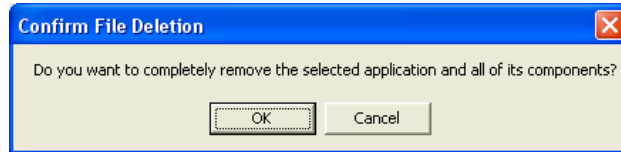
This is only relevant when a new version of the software is released.

Do not connect the parallel or USB interface during the reinstallation.

Start the software "Control Software (USB).exe". You will be asked to "Modify", "Repair" or "Remove". Select "Remove".



Select "Ok" to remove the application and all of its components.



The software is now uninstalled.

For reinstalling the software start the "Control Software (USB).exe" and follow chapter 1.

7. Contact Information

For technical assistance with this product, please contact the supplier from whom the product was purchased.

For OEM inquiries, contact Videology Imaging Solutions:

North / South America:	Europe:
Videology Imaging Solutions Inc. 37M Lark Industrial Parkway Greenville, RI 02828 USA Tel: (401) 949-5332 Fax: (401) 949-5276	Videology Imaging Solutions Europe Neutronenlaan 4 NL-5405 NH Uden, Netherlands Tel: +31 (0) 413 256 261 Fax: +31 (0) 413 251 712

Please visit our website at: <http://www.videologyinc.com>

VIDEOLOGY IMAGING SOLUTIONS is an ISO 9001 registered video camera developer and manufacturer serving industrial, machine vision, biometric, security, and specialty OEM markets. Videology designs, develops, manufactures, and distributes video, image acquisition, and display technologies and products to OEMs worldwide.