

VIDEOLOGY[®]

IMAGING SOLUTIONS INC.

Operation Manual

20VC335 (EIA) / 21VC335 (CCIR)



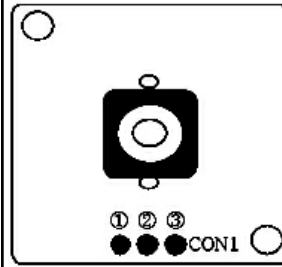
BOX CONTENTS

1. Camera module
2. Connection cable
3. User manual

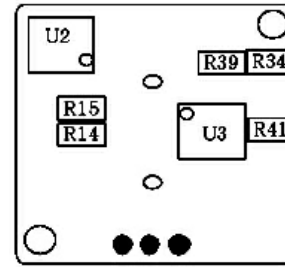
SAFEGUARDS & WARNINGS

Prior to installation and use of this product, the following WARNINGS should only be observed.

1. Installation and servicing should only be done by Qualified Service and Installation Personnel.
2. Installation shall be done in accordance with all local and national electrical and mechanical codes.
3. Use only installation methods and materials capable of supporting four (4) times the maximum specified load.



Top View



Bottom View

Control Functions

1) Connector (CON1)

Pin	Wire Color	Remark
1	Red	12VDC Power Input
2	Black	Common / Ground
3	White	Video Out (1Vp-p)

NOTE: See 20K14X User Manual (attached)

2) Mirror Mode

Presetting ---> Mirror off (R15 In)

Pin	Mirror	Remark
1	On	R15 Delete
2	Off	R15 Insert

3) Electronic Exposure (Auto Iris)

Presetting ---> EE on (R14 DEL)

Pin	EE	Remark
1	On	R14 Delete
2	Off	R14 Insert

4) AGC (Gain)

Presetting ---> R34 (value 22k)

Pin	Gain	Remark
1	Max	R34: 000 ohm
2	Medium	R34: 22k

To adjust gain setting
R34 value up ---> Gain Up
R34 value down ---> Gain Down

Gain Setting Value ←



Technical Specifications

Electrical	20VC335	21VC335
	EIA	CCIR
CCD Sensor	1/3" IT CCD	
Active Pixels (H x V)	512 x 492	500 x 582
Resolution	420 TVL	
Sensitivity	<0.3 lux	
Signal to Noise Ratio	≥ 49 dB	
Gamma	Fixed 0.45	
Gain	AGC On / Fixed (via hardware change)	
Synchronization	Internal	
Shutter Speed	1/60 - 100,000	1/50 - 100,000
Mirror Mode	Default Off / On (via hardware change)	
Iris	Electronic On / Off (via hardware change)	
Video Output	1Vp-p (75 ohm)	
Power Supply	12VDC (9V-16V) (not polarity protected)	
Power Consumption	<1.2W (max 115mA)	

Environmental

Ambient Operating Temperature	-10° C ~ 50° C (14° F ~ 122° F)
Storage Temperature	-15° C ~ 65° C (5° F ~ 149° F)
Operating Humidity	95% RH

Mechanical

Dimensions (WxHxD)	32mm x 32mm x 26mm (1.25" x 1.25" x 1.02")
Weight	30g w/ lens (1.05 oz)
Lens Mount	M-12 board
Accessories	3pin 200mm Power / Video With Flying Leads