



## Quick Installation Guide

These instructions are for configuring a new camera via USB. If you are reconfiguring an existing camera, it must be reset to default first (refer to Section 4.3 in the Instruction Manual).

1. Install a lens on the camera.  
If using a manual iris lens, set the camera to dipswitch 1.  
If using a DC auto iris lens, set the camera to dipswitch 2.
2. The camera must be set to static IP (Dip Switch 4) in order to properly configure the IP address manually (For DHCP use, see Instruction Manual Section 8.2.1).

**WARNING:** Dipswitches must be set **before** the power is applied. If not, the settings will not take effect.

**WARNING:** The SD card **cannot** be plugged in during USB configuration.

3. Connect the supplied USB cable from the camera to a USB port on a PC.
4. Plug the **5VDC** power supply into a wall outlet, then into the camera.
5. A window will prompt you to run the program. Select "Run the program" and click OK. See Figure 1
6. Next, the USB Configuration window will open. If the window shown in Figure 2 does not appear, double click "My Computer" and click on the *i*-NET CAM icon.

*If the USB Configuration window is cut off at the bottom, set the monitor resolution to 1024 x 768 on the PC.*

7. Manually set the first three boxes of the IP address to match your current network's IP address (Contact your IT Dept. or Internet Service Provider). See Figure 2. Use the last box to assign a unique number between 0 and 255 to identify this camera. This number must not be the same as any other device on the network (See Instruction Manual section 7.2.2 "Set IP Address Manually" for more details). If you will be viewing this camera from outside the LAN, you will need to specify a unique http port address as well.

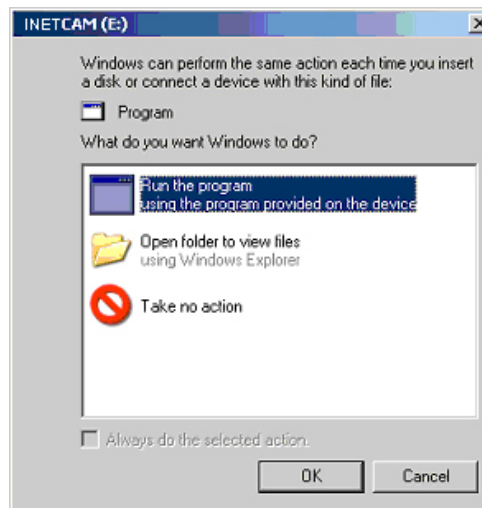


Figure 1

- a. NETMASK – Most applications use a netmask of 255.255.255.0. This allows 256 unique IP addresses on the network.
- b. GATEWAY – The gateway is the IP address of the router in the camera network check with your IT professional for the IP address of your router.  
NOTE: - If you are connecting directly to a PC, its IP address must be used as the gateway address in the camera.

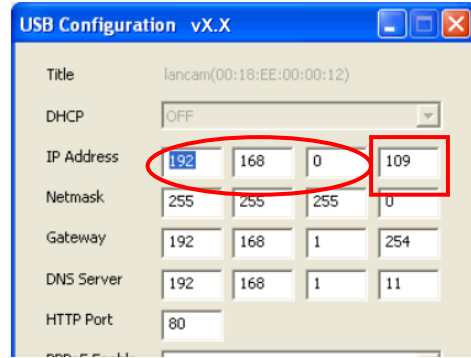


Figure 2

8. Click "Apply" to save the changes. A pop up window states that the changes will take effect as soon as the USB cable is removed. Click OK. Exit out of the program. See Figure 3.

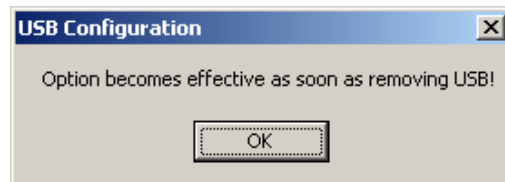


Figure 3

9. *Safely* remove USB cable from camera and PC. (It is recommended to use the "Safely Remove Hardware" icon for USB devices located on the system tray).

10. Connect the camera(s) and PC to your Network using Ethernet cables (not supplied).

11. Make sure the SD Card is in the Un-Locked position and place it into the camera.

12. Wait for the LAN to reconnect to the Network. Once connected, open the web browser and type the camera's IP address into the address bar. (Some networks require "http://" in front of the IP address). For example: http://192.168.1.168

13. A login window will prompt you to enter the user name and password. The default user name is **admin** and the default password is **inetcam**.

14. At this point, you should be viewing the camera's web page. Please refer to section 8 of the Instruction Manual (Viewing Via Microsoft® Internet Explorer 6.x) for further camera settings. If the camera's web page should freeze, click the "home" button above the image to refresh the page. See Figure 4.

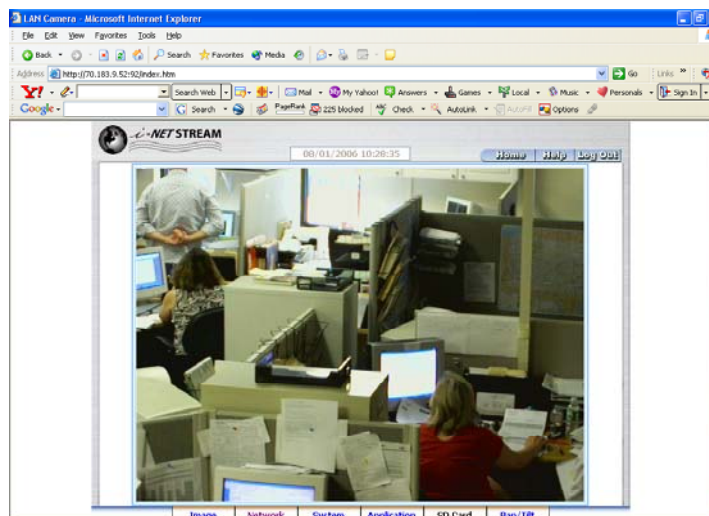


Figure 4

Doc # INS 20/21N758-Quick	Issue Date: 04/08/2008
Revision: C	Page 2 of 2