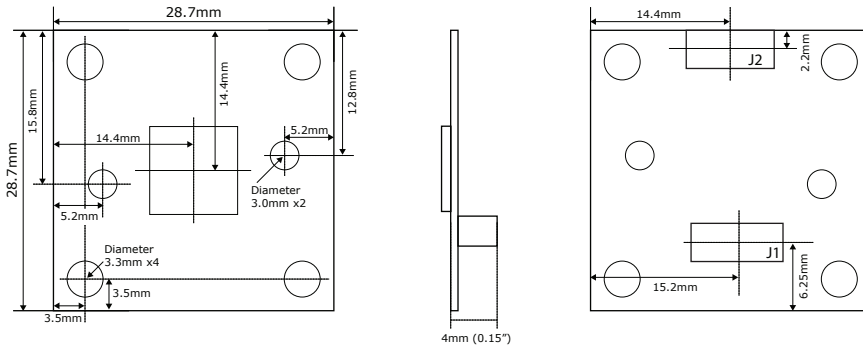
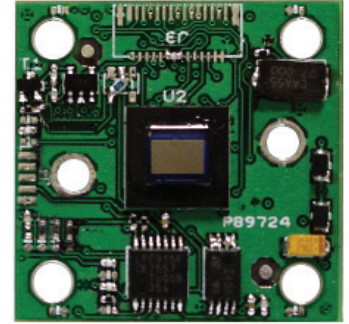


### Product Features

- Interlaced scan (analog)  
progressive scan (digital)
- 752 x 480 pixels
- 1/3" B&W, CMOS, BGA, ruggedized automotive sensor
- 60 FPS (full resolution)
- Frame rate from 30 to 200 FPS (QCIF)
- Digital 8 or 10 bit parallel, serial (LVDS), or composite (analog) video outputs
- High dynamic range of 110dB
- "Area of Interest" pixel utilization



### Technical Specifications

	24B752XA BGA Ruggedized Sensor
<b>Electrical</b>	
Image Sensor	1/3" CMOS
Active Pixels (H x V)	752 x 480, 6.0um square pixels
Binning	2x2 or 4x4 of full resolution
Frame Rate	30 to 200 FPS (QCIF)
Sensitivity	<0.1 lux out to 1.05um
Signal To Noise Ratio	> 45dB (AGC off)
Gain Control	Automatic 20 dB (default) manual/fixd (selectable via software)
Synchronization	Internal (X-tal controlled)
Shutter Speed	Automatic/fixd (selectable via software)
Shutter Mode	Global
Scan Mode	Interlaced (analog default) progressive scan (digital)
Dynamic Range	110 dB (high dynamic range) (in conjunction with appropriate software)
Video Output	Composite, LVDS, 8 or 10 bit digital
Power Input	+5VDC to 15VDC
Power Consumption	< 320mW at max data rate 100mW at standby mode

### Environmental

Operating Temperature	-40°C ~ 85°C (-40°F ~ 185°F)
Operating Humidity	20 to 93% RH
Storage Temperature	-55°C ~ 125°C (-67°F ~ 257°F)
Storage Humidity	Up to 98% RH
Lifetime	MTBF > 150,000 hrs
Packaging	Anti-static bag

### Mechanical

Dimensions W x H x D	28.7mm x 28.7mm x 5.6mm (1.13" x 1.13" x 0.22")		
Weight	<100g (<0.22 lbs)		
Lens Mount	Replace "X" in model number with desired lens mount option:		
Example: Change 24B752XA to 24B7525A to select an M-12 Board Mount.	2 = Metal M-12 Pinhole	5 = Metal M-12 Board	8 = Metal CS Board

### Safety Standards

FCC class B
-------------