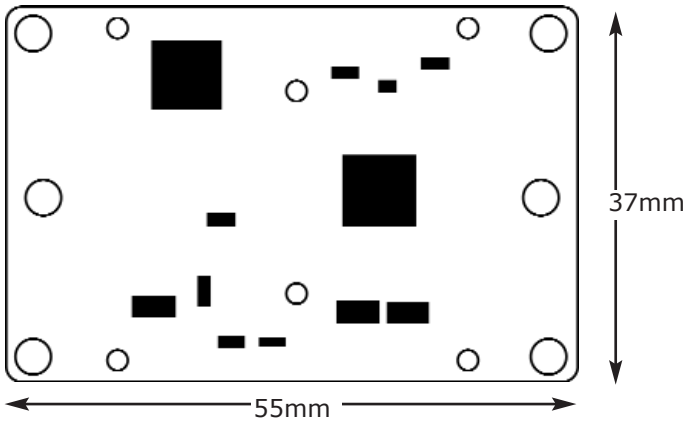
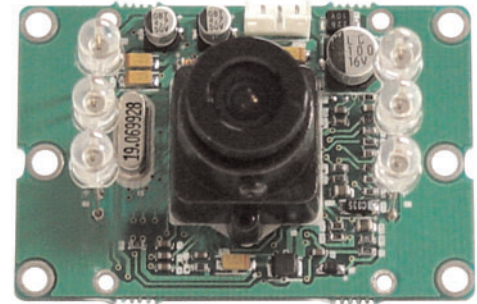




Camera Features

- 1/3" Sony CCD
- 6 Infrared LEDs
- Electronic Iris 1/60 ~ 1/100,00 sec.
- 1Vp-p Composite 75Ω Video Output
- Horizontal Resolution 380 TVL



Technical Specifications

Electrical

	20VM321 EIR	21VM321 CCIR
Scanning system	2:1 interlaced	
CCD sensor	1/3" Sony	
Active pixels (HxV)	512 x 492	512 x 582
Horizontal resolution	> 380 TVL	
Sensitivity	0 lux to approximately 8 ft (6 infrared LEDs)	
Signal to noise ratio	> 46 dB	
Gamma	0.45	
Gain	AGC	
Synchronization	Internal	
Shutter speed	Electronic 1/60 ~ 1/100,000 sec.	Electronic 1/50 ~ 1/100,000 sec.
Focal length	3.4mm	
Angle of view	92° diagonal	
Video output	1Vp-p 75Ω composite ± 10%	
Power supply	9VDC - 16VDC (12VDC regulated recommended)	
Power consumption	110mA max (without LEDs)	
Power indicator	LED	

Environmental

Ambient operating temp	-10° C ~ 50° C
Operating humidity	Max RH 95%

Mechanical

Dimensions W x H x D	55mm x 37mm x 23mm
Weight	40g
Lens mount	Integrated
Connectors	3 -pole board connector on front includes cables w/BNC & flying Leads
Accessories	60PR12DC500 12VDC regulated power supply (<500mA model)

06/27/07 PDS-20VM321 Rev D

All data subject to change without notice.

Videology® Imaging Solutions, Inc.



37M Lark Industrial Parkway
Greenville, Rhode Island 02828 USA
Tel: (401) 949 - 5332 Fax: (401) 949 - 5276
North/South American Sales: Sales@videologyinc.com

Videology® Imaging Solutions, Europe B.V.

Neutronenlaan 4
NL-5405 NH Uden, Netherlands
Tel: +31 (0) 413 256261 Fax: +31 (0) 413 251712
European Sales: Info@videology.nl